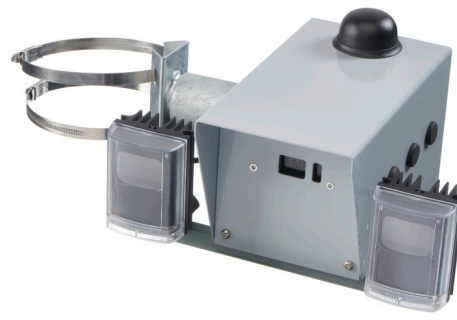


MCE-LRC2 Long Range Remote Camera System

- 4G/3G/GPRS comms
 - IP66 Enclosure
 - 200m IR illumination
 - Low Power
 - MCE-MRC Camera
 - Inbuilt antenna
 - Wall or Pole fixing
 - 12V DC or AC mains variants
 - Simple to install and commission
- The MCE-LRC 4G/3G/GPRS Long Range Camera System is a rapid deployment unit for remote and exposed locations. It can be supplied in 12V DC or mains power variants with optional internal batteries.
- The IP66 stainless steel enclosure is designed to withstand harsh environments. It can be installed onto walls, poles or existing structures such as street lights or columns and is supplied with a robust bracket as standard.
- The MCE-LRC system is fitted with the MCE-MRC camera module, along with a high power IR illumination system, with a range of up to 200m. The illuminators can be adjusted for power and distance. Standard versions have 850nm illumination but 940nm is also available. An internal antenna is fitted, with option for external.
- With low power consumption the LRC system can utilise existing DC battery / solar power systems or be connected to mains power sources. When fitted with the optional internal battery the LRC can utilise existing street lighting switched mains power.
- The MCE-LRC can accept connection to local sensors (eg water level) to automatically trigger enhanced image acquisition. Images are sent in real time to the Meteor Web Portal or can be directly sent via ftp or email for integration into existing SCADA or telemetry systems.



Camera Specification

Lens	M12 Board Mount. 3.6mm Standard (6mm, 12mm optional)
Resolution	2MP selectable up to 1600x1200
Image format	jpeg
Image Storage	Internal memory card, 20,000 images minimum
Input	Digital event trigger Input
IR illuminator	200m range high power, 850nm (940nm optional)
Zoom	Digital zoom 0-10 centralised
Image output	ftp, email, Meteor web portal
Configuration	SMS, email, bluetooth (optional)
Filter	IR bandpass, IR cut (optional)

Communications

Modem	LTE module supporting LTE-TDD/LTE-FDD/HSPA+/GSM/GPRS/EDGE
Antenna	Vandal Resistant Puck, optional external via SMA
GPS (Option)	GPS/GLONASS via optional external antenna

Physical Characteristics

Dimensions	150 high x 272 deep x 320 mm
Weight	3 Kg
Operating Temperature	-20 to +50 Deg C
Housing	IP66 Stainless Steel
Fixings	Wall pole or column mount

Power

Power Supply	DC or AC
Power consumption	<0.3W average (30W max instantaneous)
Battery Capacity	4Ah (Optional)
DC Operating Voltage	12V DC nominal (6-28V)



FS 596313

