

ACCURATE, RELIABLE CONTINUOUS WATER QUALITY MONITORING

Meteor's industry leading monitoring services provide flexible, reliable and cost effective outcomes. Driven by increasing demand for accurate, high resolution Water Quality measurements from any location, Meteor Systems are in use across the Water Industry.



Water Quality As a Service (WQAaS) - Meteor provide a complete Water Quality monitoring service including appropriate sensors, equipment hire, installation, data provision, ongoing calibration and maintenance. Extremely cost effective, the systems are hired on a monthly basis with no upfront capital expenditure.

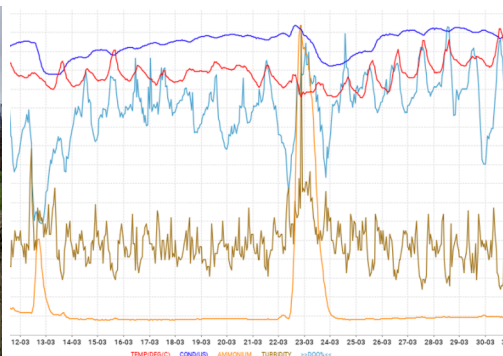
System Provision - Complete turnkey systems including appropriate sensors, data display and integration into existing SCADA.

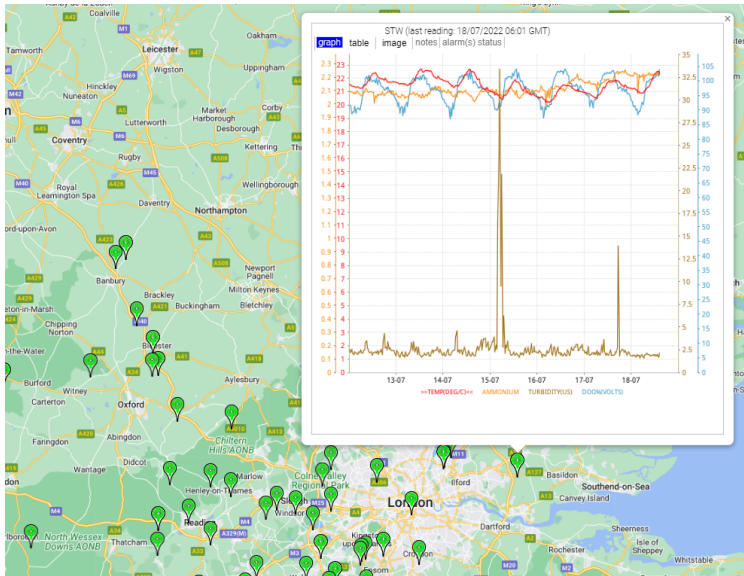
The MeteorCloud™ web portal provides instant access from any device with powerful tools for image analysis and dissemination.

Meteors Water Quality Services team have extensive expertise covering all aspects of deployment, calibration and maintenance.

ESNET System

- Real Time Data
- Fast deployment
- Fixed monthly cost
- No capital outlay
- Proactive maintenance
- MeteorCloud data service





The MCE-ESNET platform forms the core of the system, connecting with a wide variety of multi-parameter sondes and instruments. Data is sent in real time to the MeteorCloud™ platform for immediate viewing from any tablet, phone or laptop.

Portable systems are complemented with kiosk options for multiple applications including Final Effluent, Process, Discharge and Catchment monitoring.

Meteor's Water Quality services team survey, install and maintain the equipment in the field. Scheduled calibrations take place at Meteors certified laboratory to ensure consistent, accurate measurements.

Proactive data analysis, field visits, in depth customer training and support ensure that data is robust and reliable.

Meteor Water Quality Services provide a dependable, proven solution for Continuous Water Quality monitoring from any location.

- Temperature
- Conductivity
- PH
- Ammonium
- Dissolved Oxygen
- Turbidity
- Nitrate
- FDOM
- Chlorophyll/BGA
- Level/Flow
- Weather/Rainfall

